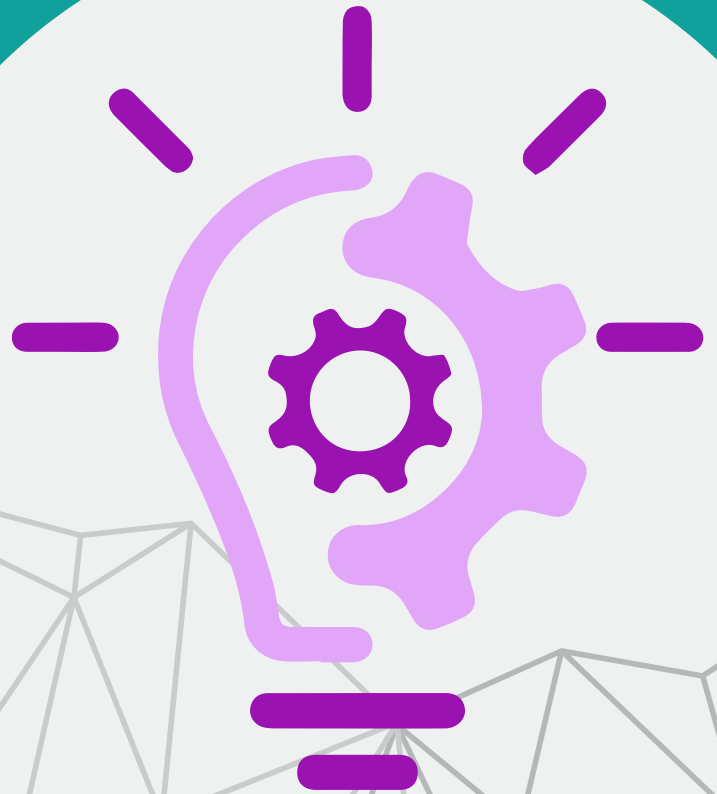




Co-funded by
the European Union



DIGITAL EMPOWERMENT

Enhancing Youth Work
Skills for the Digital Age

INFOPACK

10-15 July Romania



About the project

"Digital Empowerment: Enhancing Youth Work Skills for the Digital Age" Partner Building Activity brings together youth workers and NGO representatives to collaboratively explore innovative project ideas aimed at empowering young people in the digital era. Through interactive brainstorming sessions, skill-sharing workshops, and networking opportunities, participants will leverage their collective expertise to develop impactful projects that harness digital tools and methodologies to address the needs and aspirations of youth communities. By fostering collaboration and creativity, this activity lays the foundation for future partnerships and initiatives that drive positive change in youth work practices and outcomes.





Objectives

1

Facilitate Networking and Collaboration: Provide a space for youth workers and NGO representatives to connect, share experiences, and forge partnerships for collaborative project development and implementation.

2

Spark Creativity and Innovation: Inspire participants to generate fresh ideas and innovative project concepts that leverage digital technologies and approaches to address contemporary challenges facing young people.

3

Build Capacity in Digital Youth Work: Offer skill-building workshops and resources to enhance participants' digital literacy, proficiency, and confidence in utilizing digital tools and platforms to support youth empowerment and engagement.

4

Foster Sustainable Project Development: Support participants in refining project ideas, defining goals and objectives, and mapping out implementation strategies to ensure the viability, impact, and sustainability of proposed initiatives in advancing digital empowerment and youth work practices.



About us

We are Scout Society, an NGO from Romania that works with youth and active adults to develop youngsters across Europe through non-formal education methods.

The purpose of the organisation is to encourage volunteering and to contribute at the development of the local community, especially in the process of youth education via non-formal education activities.

From the desire to help young people to grow both personally and professionally, but also to involve them in society and local communities, we began to develop projects with various themes: sport, health, multiculturalism, tolerance towards others, discrimination, increasing employ-ability, career orientation, environment , coaching, gamification, cultural heritage .

Location



Targu-Jiu is the capital of Gorj County, a region of rolling meadows, grassy hills and mountain scenery with plenty of natural and cultural attractions to explore. Tiny towns and villages dot the county, and contain some marvelous traditional architecture. Several spa towns and monasteries high in the mountains make for popular excursions.

The Jiu River valley was the scene of heavy fighting during World War I and World War II. Here, in a monumental ensemble, Brancusi created three sculptures as a memorial to the 8,500 Romanian soldiers who died defending the Jiu Valley from the advancing German army. The three sculptures, the Table of Silence (Masa Tacerii), the Gate of the Kiss (Poarta Sarutului) and the Endless Column (Coloana Infinitului), are placed on mile-long east-west axis that runs through the heart of the city.

The background is a teal color with white geometric shapes, including a large circle on the left and a smaller circle on the right containing a teal silhouette of a person. A network of thin white lines connects various points across the page.

Participant's profile

- Number of participants: 1 / 2 participants / organization
- At least 22 years old;
- Representative of organisation/ project manager or coordinator/ have experience in project writing/ have experience in project management
- Available for the whole duration of the mobility;
- Hve a high level of English;
- Have expertise or experience in areas Erasmus+ projects;
- Possess networking skills and the ability to establish and maintain professional relationships with potential partners;
- Beneficial if they have experience in developing project proposals;
- Open to new, flexible, proactive and willing to work in a multinational and intercultural team;
- Willing to share resources, expertise, and best practices with potential partners and actively contribute to the development of projects;
- Should be innovative and creative thinkers who can generate new ideas, approaches, and solutions to address common challenges or opportunities.

Transport

Arrival day:10.07.2024

Departure day:15.07.2024

Recommended airport: Bucharest (Henri Coanda Airport)

Other airports: Craiova, Cluj, Timisoara

Transfer from Bucharest to Targu-Jiu:

-by shuttle straight from the airport to Targu-Jiu; you can buy tickets in advance online from one of the bus companies: [Normandia Transfer](#) or [Bibilantravel](#)

-by train from North Train Station (Gara de Nord); [here](#) is the timetable and you can buy the tickets online

-by bus from Militari Bus Station; [here](#) you can find the timetable; (we recommend Normandia)

The budget for your travel will be calculated with the [Erasmus+ distance calculator](#) (starting point is the city where your organisation is based and the end is Targu-Jiu, the place of the PBA)

*Keep in mind the the journey from Bucharest to Targu-Jiu takes around 5-6 hours

Accommodation

Participants will be accommodated at Hotel Anna Junior, in shared twin rooms, divided by gender.



Reimbursement

The project is financed by Erasmus+ programme meaning that the travel costs, food and accommodation will be covered by the hosting organisation.

The budget for your travel is according with the Erasmus+ distance calculator.

To receive reimbursement you need to provide us all the original documents of transportation (plane, train or bus) that are used during your trip from the departure city to the project location. These include: tickets, receipts, boarding passes, invoices. **We can't reimburse travel costs without these original documents.**

Reimbursement will be done in EURO regardless of the mentioned currency in tickets, receipts and invoices. All tickets purchased in another currency other than Euro will be converted and calculated through the official webpage of the European Commission.

Reimbursement will be done through bank transfer after the project only to the sending organization bank account.

Travel and health insurance

It is recommended for all participants to provide their own health insurance.

This should cover you for the full duration of your time in Romania. You can use the free European Health Insurance (EHIC) to allow you access to public hospital treatment. Having this card means you may be able to receive free medical treatment in the event of an emergency, but it is NOT guaranteed.

Also, please be aware that the EHIC is NOT a travel insurance policy , it will not cover private health care, non-emergency health costs, or being flown back to your home country. To learn more , please go to : ehic.europa.eu/

Travel insurance to cover the safety of you possessions, lost luggage, delays to flight is not mandatory requirement, but it is advisable.

Your tasks

Please make sure you have the following:

- presentation of your organization
- projects implemented
- ideas for future projects
- concept notes for the projects that you want to propose during the PBA

Contact

contact@scoutsociety.ro

The background is a solid teal color with large, white, circular, overlapping shapes that create a pattern of negative space. The shapes are positioned in the corners and along the edges, leaving a large teal area in the center.

See you soon!